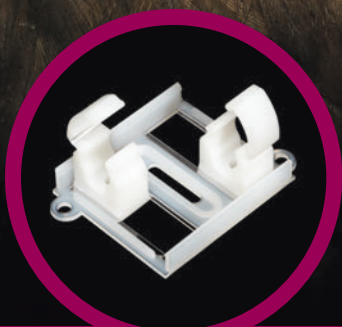
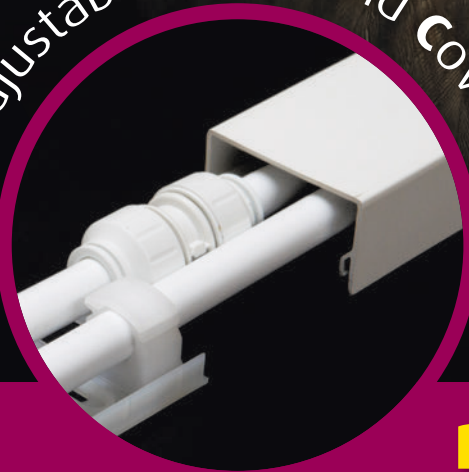


NEW
ADJUSTABLE
adjustable plate and cover
FEATURED INSIDE



APAC - Adjustable Plate And Cover System



PIPE MANAGEMENT SYSTEMS
Falcon Trunking Systems Limited

Continuous Backing System



Falcon Trunking Systems Limited

'SYSTEMS THAT BENEFIT BOTH MERCHANT AND INSTALLER'



Welcome to the latest Falcon Trunking Pipe Management Systems brochure that contains product details for both our Continuous Backing System and Adjustable Plate And Cover (APAC) System. Both of these Systems will conceal surface mounted central heating pipework commonly found in Social Housing properties, or in properties that are undertaking central heating refurbishments/upgrades.

The principal benefit of the APAC1 System to the Merchant and Contractor is that the one sized nature of the trunking cover is suitable to encase 10mm, 15mm and 22mm copper or plastic pipes. (See APAC pipe guide on back page).

The APAC System is proving to be a popular addition to our range, and is perfectly suited to contractors, sub contractors and in house fitters specialising in new or ongoing heating maintenance and refurbishment projects. Local Authorities, Social Housing ALMO & DLO organisations and Housing Associations are now looking to specify the product. The time and cost saving aspect are just two of many benefits which the revolutionary APAC design offers over traditional 'boxing in' methods.

We have extended the product range of the Adjustable Plate And Cover (APAC) System to include APAC2, taking it's capabilities to another level. APAC2 is a dedicated profile that will specifically conceal the leading manufacturer's 2 x 22mm plastic pipes and straight couplers. In conjunction with our back plate (APAC2/BPC) and APAC clips, APAC2 can be used for a variety of other 10mm, 15mm, 22mm copper or plastic pipe size applications including light commercial projects.

A full product description, fixing guidelines and ordering codes are featured on the following pages.

Orders can be placed via email sales@falcontrunking.co.uk or you can fax us on **01706 371550**. Members of our sales support team will assist you with any queries you may have on products, delivery dates etc.

If you require additional copies of this brochure either visit our website www.falcontrunking.co.uk where you can download a PDF version, or scan the QR code below. Alternatively, for printed copies please ring us on **01706 372929**.

NEW



Support our
Manufacturing Industry



Buy British



Scan the QR Code to
download a PDF version
of this brochure



Pipe Trunking - Continuous Backing System

'COMPLETELY ENCLOSES THE PIPES'

A continuous backing system of pipe containment which completely encloses the pipes in a white uPVC box section. Any small unevenness of the installation surface can be overcome, as the system is in continuous contact with the installation surface, **and does not rely solely on the pipe clips**. It is recommended that a minimum of three double pipe clips are used per 2.5 metre length.

All pipe trunking is supplied in standard 2.5m lengths, with 3m lengths available if preferred.



PTR210 - (40mm x 16mm)

PTR210 Shown for illustration purposes with 2 x microbore pipes (8/10mm) and PTCL210 double pipe clips

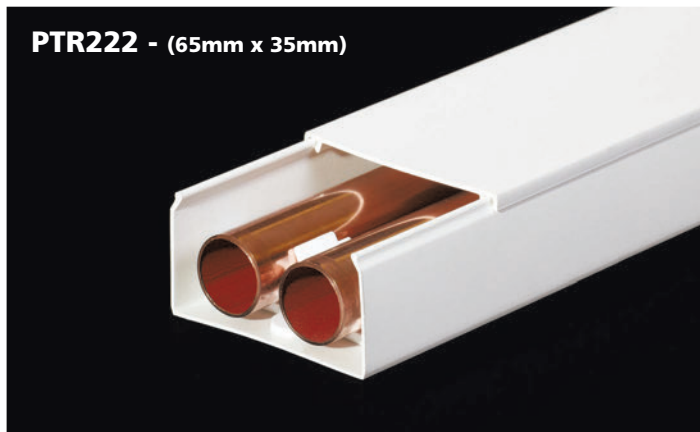
REF **PTR210** PACK QTY **25** CLIP REF **PTCL210** PACK QTY **75**



PTR215 - (50mm x 25mm)

PTR215 Shown for illustration purposes with 2 x 15mm pipes and PTCL215 double pipe clips

REF **PTR215** PACK QTY **25** CLIP REF **PTCL215** PACK QTY **75**



PTR222 - (65mm x 35mm)

PTR222 Shown for illustration purposes with 2 x 22mm pipes and PTCL222 double pipe clips

REF **PTR222** PACK QTY **10** CLIP REF **PTCL222** PACK QTY **30**



PTR228 - (75mm x 50mm)

PTR228 SHOWN FOR ILLUSTRATION PURPOSES WITH 2 X 28MM PIPES AND PTCL228 SINGLE PIPE CLIPS

REF **PTR228** PACK QTY **6** CLIP REF **PTCL228** PACK QTY **36**



PTCL210 DOUBLE PIPE CLIP

PACK QTY **75**



PTCL215 DOUBLE PIPE CLIP

PACK QTY **75**



PTCL222 DOUBLE PIPE CLIP

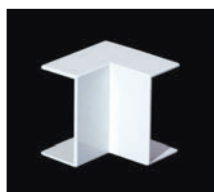
PACK QTY **30**



PTCL228 SINGLE PIPE CLIP

PACK QTY **36**

A range of accessories are available for the PTR210, PTR215 & PTR228 pipe trunking systems comprising of internal, external and flat angles, flat tee pieces and stop ends.



INTERNAL ANGLE

REF **FIA 3** to fit PTR210
REF **FIA 5** to fit PTR215
REF **FIA 32** to fit PTR228



EXTERNAL ANGLE

REF **FEA 3** to fit PTR210
REF **FEA 5** to fit PTR215
REF **FEA 32** to fit PTR228



FLAT ANGLE

REF **FFA 3** to fit PTR210
REF **FFA 5** to fit PTR215
REF **FFA 32** to fit PTR228



FLAT TEE

REF **FFT 3** to fit PTR210
REF **FFT 5** to fit PTR215
REF **FFT 32** to fit PTR228



STOP END

REF **FSE 3** to fit PTR210
REF **FSE 5** to fit PTR215
REF **FSE 7** to fit PTR222
REF **FSE 32** to fit PTR228

**ACCESSORIES
STANDARD PACK
QUANTITIES**

PTR210 Accessories 25

PTR215 Accessories 10

PTR228 Accessories 1

APAC - Adjustable Plate And Cover System

NEW

'CAN BE USED WITH COPPER OR PLASTIC PIPES'

The new and exciting revolutionary alternative to our continuous backing system. The APAC System is easy to install with time saving benefits. The system is suitable for use with both copper or plastic pipe, and will cover 15mm plastic pipe couplers and elbows. It is recommended that four complete back plates are used per 2.5 metre - 3 metre length.

The Apac System cover is supplied in standard 2.5m lengths (APAC1), with 3m lengths available if preferred (APAC1/3).

APAC1 - (63mm x 35mm)



APAC1 Universal pipe cover for 10mm, 15mm & 22mm copper or plastic pipes

REF	APAC1	PACK QTY	10	REF	APAC1/3	PACK QTY	10
-----	--------------	----------	-----------	-----	----------------	----------	-----------

APAC15



APAC15 Back plate and 2 x 15mm pipe clips supplied ready assembled


REF	APAC15	PACK QTY	40
-----	---------------	----------	-----------

APAC22



APAC22 Back plate and 2 x 22mm pipe clips supplied ready assembled

REF	APAC22	PACK QTY	40
-----	---------------	----------	-----------



PCR10
APAC 10mm reducer

REF	PCR10	PACK QTY	100
-----	--------------	----------	------------



APAC 15mm CROSS OVER TEE

REF	APAC/XT	PACK QTY	2
-----	----------------	----------	----------



APAC INTERNAL ANGLE

REF	APAC/IA	PACK QTY	10
-----	----------------	----------	-----------




APAC EXTERNAL ANGLE

REF	APAC/EA	PACK QTY	10
-----	----------------	----------	-----------



APAC STOP END

REF	APAC/SE	PACK QTY	10
-----	----------------	----------	-----------




APAC FLAT ANGLE

REF	APAC/FA	PACK QTY	10
-----	----------------	----------	-----------




APAC STRAIGHT COUPLER

REF	APAC/SC	PACK QTY	10
-----	----------------	----------	-----------



APAC TOP ENTRY COVER

REF	APAC/TEC	PACK QTY	10
-----	-----------------	----------	-----------

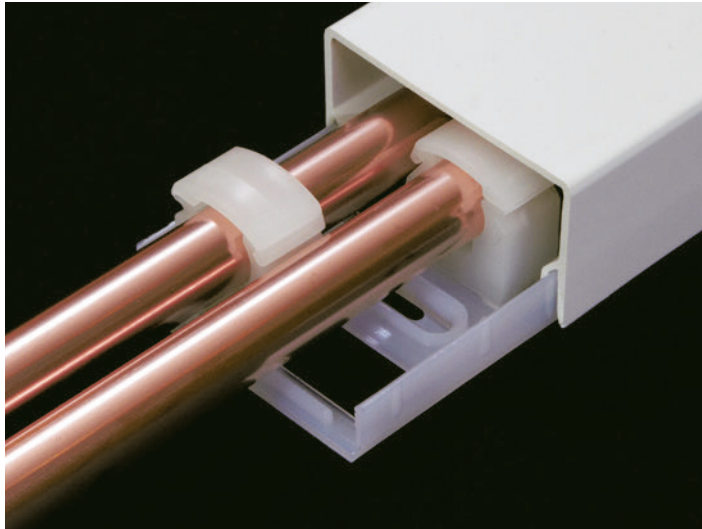


APAC SIDE ENTRY COVER

REF	APAC/SEC	PACK QTY	10
-----	-----------------	----------	-----------

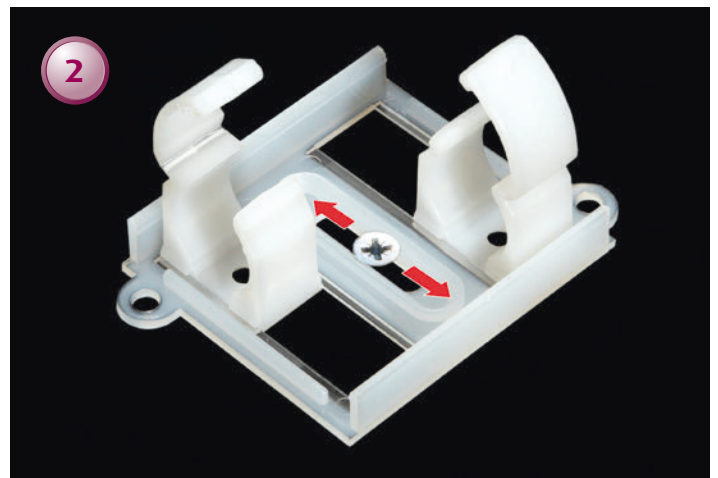
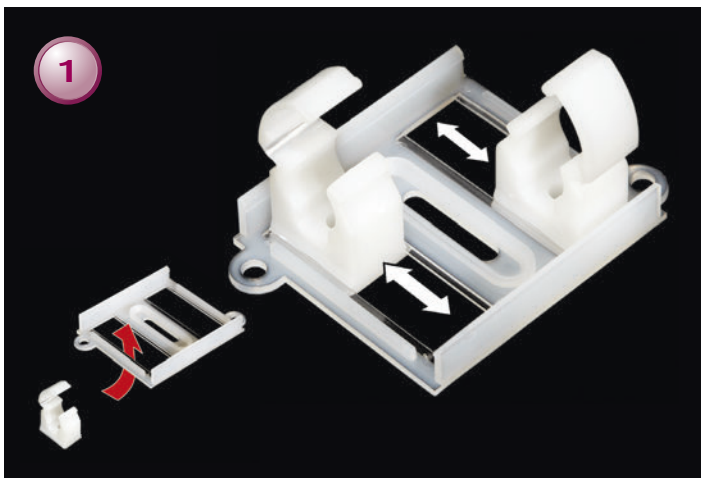
The APAC System In Action

'APAC1 WILL COVER 10mm ,15mm & 22mm PIPES'



- **One sized adjustable** nylon back plate will house our APAC 15mm & 22mm pipe clips and 10mm reducer, or a combination of these sizes.
- **One sized** universal white uPVC cover, used only in conjunction with our back plates will cover 10mm, 15mm & 22mm pipes.
- **One sized** universal white uPVC cover will accommodate many of the leading brands 15mm plastic pipe couplers and elbows.
- **Adjustable** horizontal positional movements are possible to **both** clip positions (see pic 1 below) **and** back plate (see pic 2 below).
- **Adjustable** easy to fit clips incorporating 'positive action' pipe retaining feature.
- **Substantial time savings**, can be made with the APAC System by eradicating alignment difficulties, prior to final fixing.
- **Positive secure fixing** is achieved because the cover is fastened into the **total length** of the back plates, NOT the clip edges.
- **Pipes are retained in clips**, that remain independent of the cover.
- **Retro fit** - existing pipework by using just the backplate and cover.

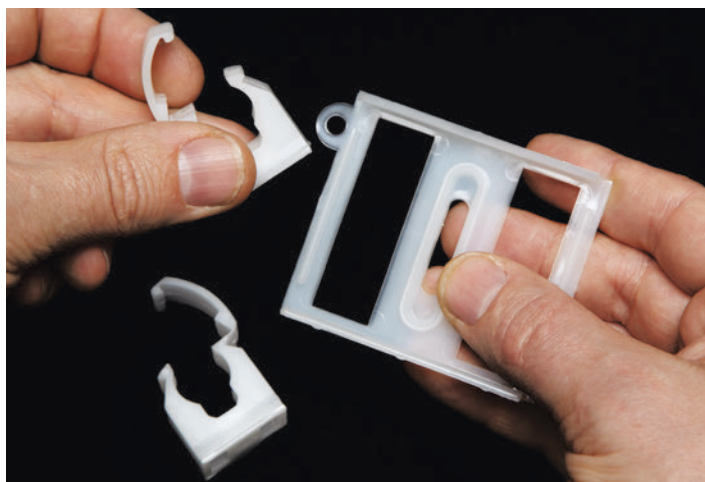
Clips and plate are supplied ready assembled



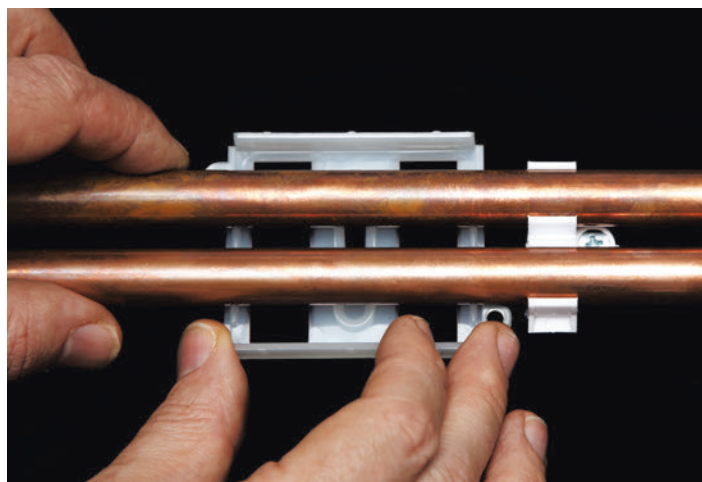
Shown for illustration purposes only. The Apac System can cover many of the leading brands 15mm plastic pipe couplers and elbows.

The APAC System In Action

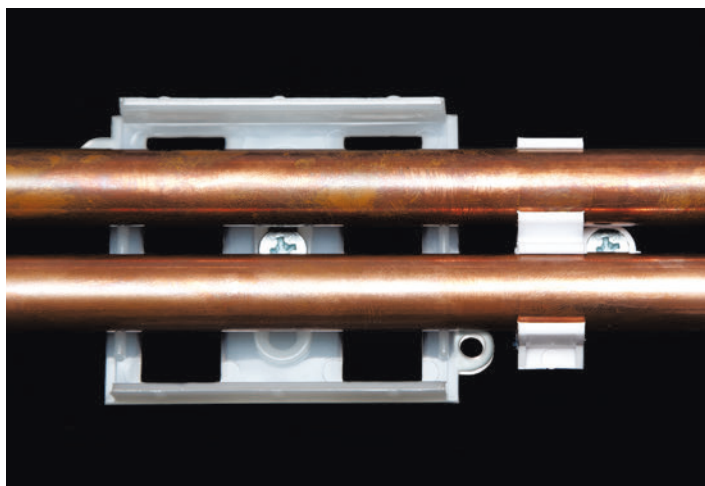
'HOW TO COVER EXISTING CLIPPED EXPOSED PIPEWORK'



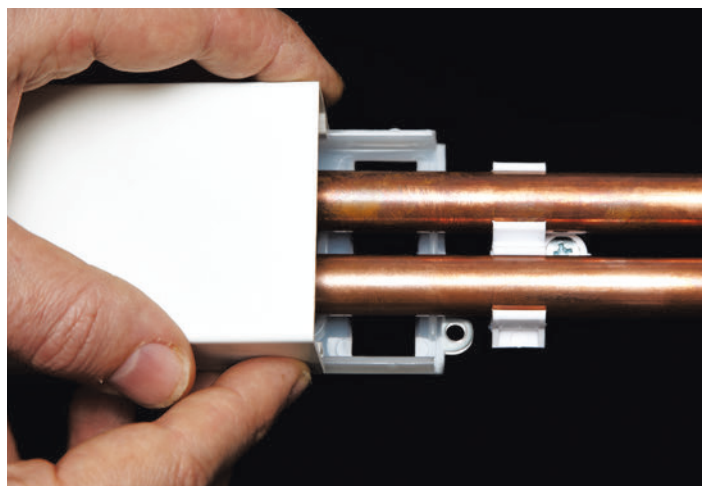
Remove both of the existing clips from the APAC back plate.



Slide the APAC back plate behind the existing pipework (no need to remove existing fittings).



Secure the back plate into position.



Click and fix in the usual manner into the APAC1 trunking

APAC SYSTEM PIPE SIZE TRUNKING GUIDE

COPPER	SIZE	PIPE	FITTING
APAC1	10mm	✓	✓
APAC1	15mm	✓	✓
APAC1	20mm	✓	✓
APAC1	22mm	✓	✓
APAC1	28mm	✗	✗
APAC2	10mm	✓	✓
APAC2	15mm	✓	✓
APAC2	20mm	✓	✓
APAC2	22mm	✓	✓
APAC2	28mm	✓*	✓*

PLASTIC	SIZE	PIPE	FITTING
APAC1	10mm	✓	✓
APAC1	15mm	✓	✓
APAC1	20mm	✓	✓
APAC1	22mm	✓	✗
APAC1	28mm	✗	✗
APAC2	10mm	✓	✓
APAC2	15mm	✓	✓
APAC2	20mm	✓	✓
APAC2	22mm	✓	✓
APAC2	28mm	✓*	✗

* Subject to the type of clip utilised.