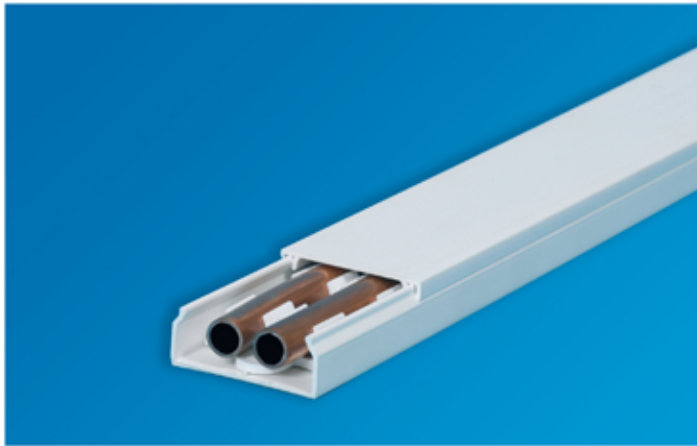


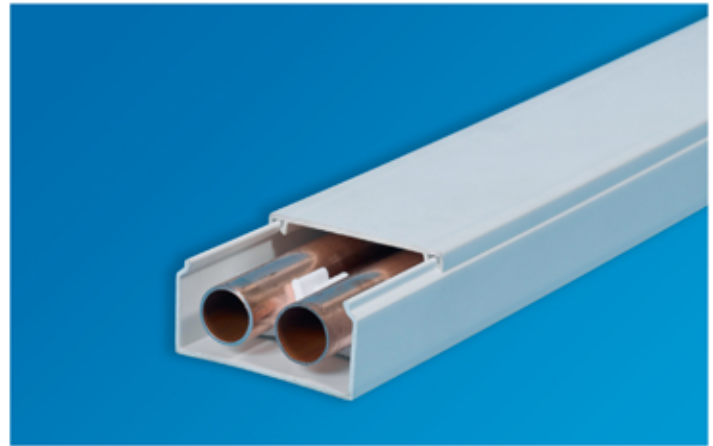


# Pipe Trunking



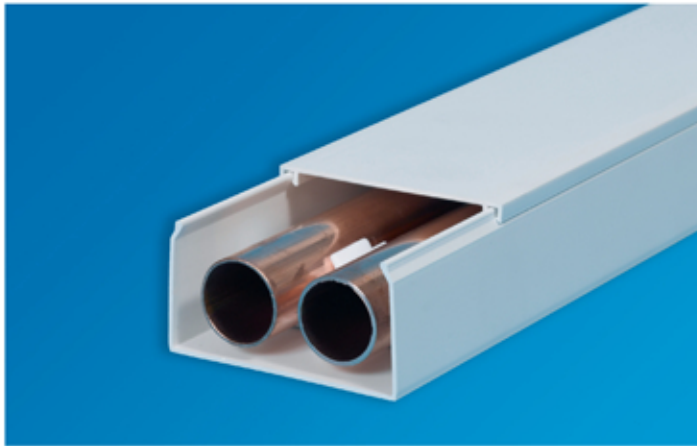
**PTR210** Shown for illustration purposes with 2 x microbore pipes (8/10mm) and PTCL210 double pipe clips

REF **PTR210** PACK QTY **25** CLIP REF **PTCL210** PACK QTY **75**



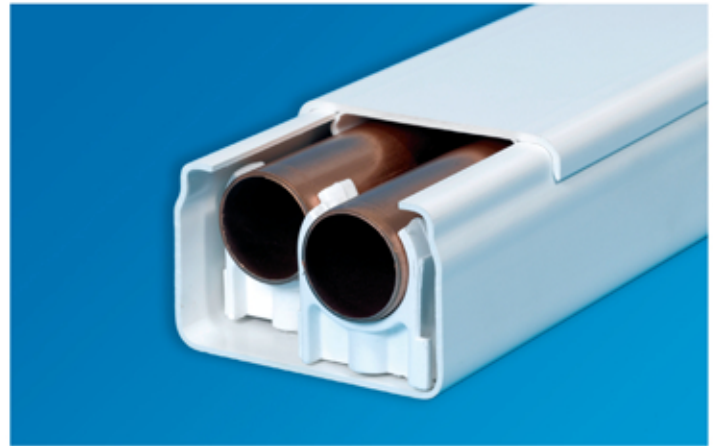
**PTR215** Shown for illustration purposes with 2 x 15mm pipes and PTCL215 double pipe clips

REF **PTR215** PACK QTY **25** CLIP REF **PTCL215** PACK QTY **75**



**PTR222** Shown for illustration purposes with 2 x 22mm pipes and PTCL222 double pipe clips

REF **PTR222** PACK QTY **10** CLIP REF **PTCL222** PACK QTY **30**



**PTR228** Shown for illustration purposes with 2 x 28mm pipes and PTCL228 single pipe clips

REF **PTR228** PACK QTY **6** CLIP REF **PTCL228** PACK QTY **36**



**PTCL210 DOUBLE PIPE CLIP**

PACK QTY **75**



**PTCL215 DOUBLE PIPE CLIP**

PACK QTY **75**



**PTCL222 DOUBLE PIPE CLIP**

PACK QTY **30**



**PTCL228 SINGLE PIPE CLIP**

PACK QTY **36**

A continuous backing system of pipe containment which completely encloses the pipes in a box section. Any small unevenness of the installation surface can be overcome due to the fact that the system is in continuous contact against the installation surface and does not rely solely on the pipe clips. It is recommended that a minimum of three double pipe clips are used per 2.5 metre length.

All pipe trunking is supplied in standard 2.5m lengths. Other lengths can be supplied to your individual specification.

A range of accessories are available for the PTR210, PTR215 & PTR228 pipe trunking systems comprising of internal, external and flat angles, tee pieces and end caps.

**Please note:** No accessories are available for the PTR222 system.